

str8™ spec sheet 90CRI direct

material
4" dia. ribbed extruded aluminum outer housing in three lengths, available in 2 anodized and 12 standard powder coat paint finishes listed below.

LED
COB in 2700K, 3000K, 3500K, or 4000K 90+ cri standard rated >36,000 hours L70 (6.8K) per LM-80 test data, and 71,000 hours projected life per IES TM-21.

downlight optics
LEDiL® Angelina 82mm dia 31mm high (RoHS compliant) available in 20° spot, 30° medium, 50° wide with specular anodized finish. 90° extra wide features matte white highly reflective finish. color mixing sublens standard. standard mounting clamp allows for easy replacement of reflector in field. the typical total beam angle is the full angle measured where the luminous intensity is half of the peak volume.

driver
constant current, class P, class 2 power unit, class A sound rating, universal input (120-277V) programmable driver, 5% minimum dimming level, PF >0.90. protections include short circuit, input/output isolation and surge protection (3KV). wired for 0-10v dimming from factory.

mounting standard
driver in junction box (requires 2 1/8" deep electrical box). ultrathin vertical stainless steel cable and field adjustable gripper that allow for exact AFF mounting heights. cloth-covered power cord color options listed below. cloth cord requires special stripping tool (link). 5"dia canopy painted to match fixture.

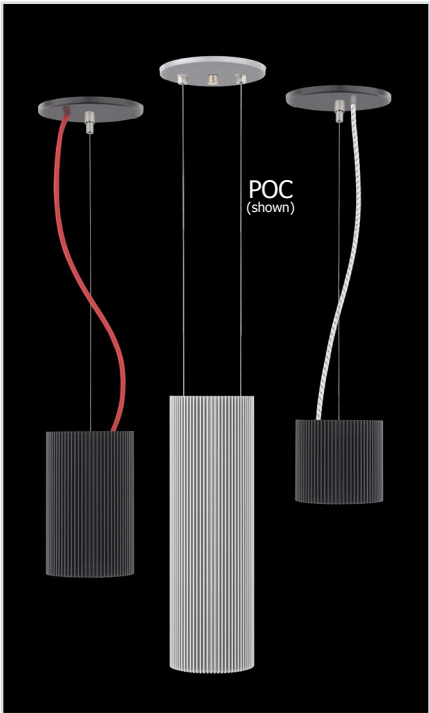
canopy mounted driver (CDVR) (optional)
5" dia canopy with 4" x 3.5" ribbed extruded aluminum, finished to match fixture (see image below)

remote enclosure (.LV) (optional)
the standard driver can be remote mounted up to 33ft from the LED. suspension length should be considered in distance. remote enclosure supplied. for distances greater than 33ft consult factory. for Chicago Plenum installation consult factory.

power over cable (POC) (optional)
Class 2 LED powered suspension system that suspends and powers the fixture with thin stainless steel copper-core conductive cables, providing a clean look without the need for a separate power cord. powered suspension requires cable cutter (link) specifically designed to cut stainless steel aircraft cable from 1/32" to 1/8".

finish
select from 2 anodized and 12 standard powder coat paint finishes listed below or specify RAL# for custom colors.

emergency
if required, recommend use of inverter (by other).



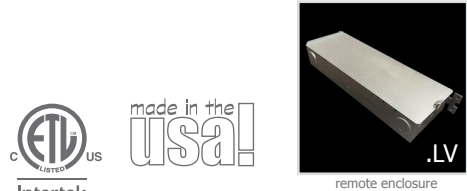
catalog number

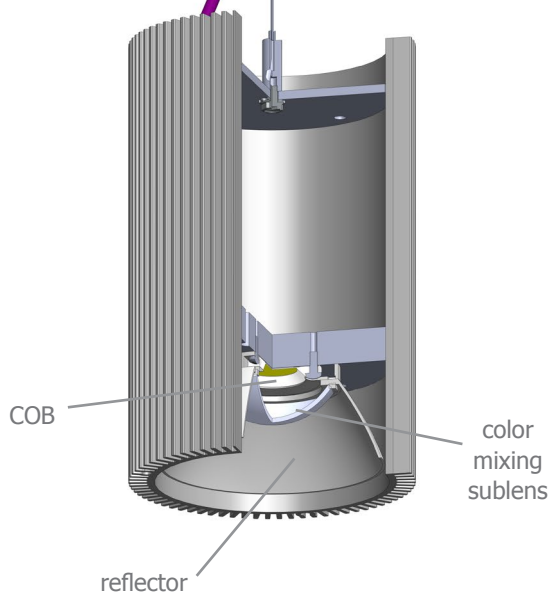
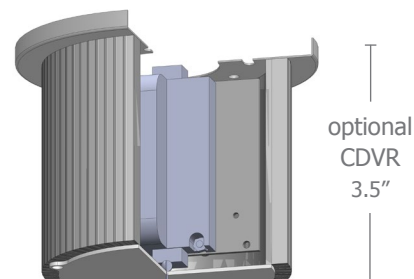
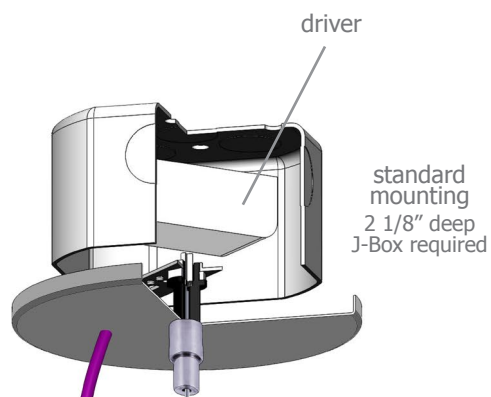
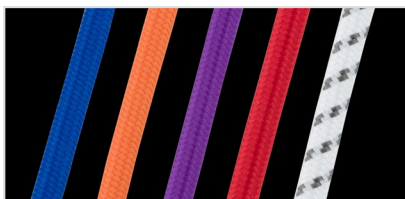
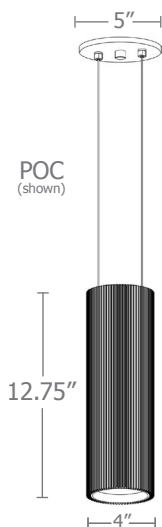
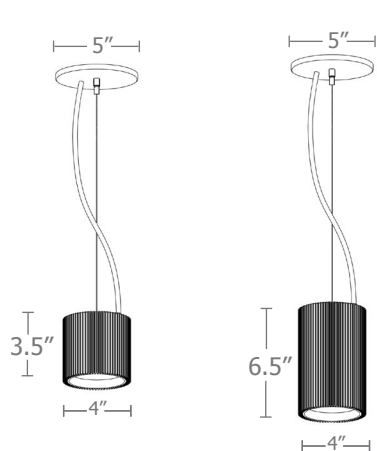
--	--	--	--	--	--	--

size	beam	CCT	lumens	anodized finishes	power cord	options
P7503 driver in j-box	S 20° spot	27 2700K	L1 395 lm	AN silver anodized	BUPC blue cloth cord	3FT 36" cable(s)
P7503.LV remote enclosure 4"dia X 3.5 "ht	M 30° med	30 3000K	L2 695 lm	ANB anodized black	ORPC orange cloth cord	6FT 72" cable(s)
	W 50° wide	35 3500K	L3 995 lm		PLPC purple cloth cord	CDVR canopy mounted driver
	XW 90° extra wide	40 4000K	H1 1390 lm		RDPC red cloth cord	
			H2 1985 lm		WGPC white & gray dot cloth cord	
P7506 driver in j-box	S 20° spot	27 2700K	L1 395 lm			
P7506.LV remote enclosure 4"dia X 6.5 "ht	M 30° med	30 3000K	L2 695 lm		POC power over cable	
	W 50° wide	35 3500K	L3 995 lm			
	XW 90° extra wide	40 4000K	H1 1390 lm		WHPC white cord	
P7512 driver in j-box			H2 1985 lm		BKPC black cord	
P7512.LV remote enclosure 4"dia X 12.75"ht			H3 2780 lm		SBPC silver braid cord	



premium finish
RAL specify RAL#



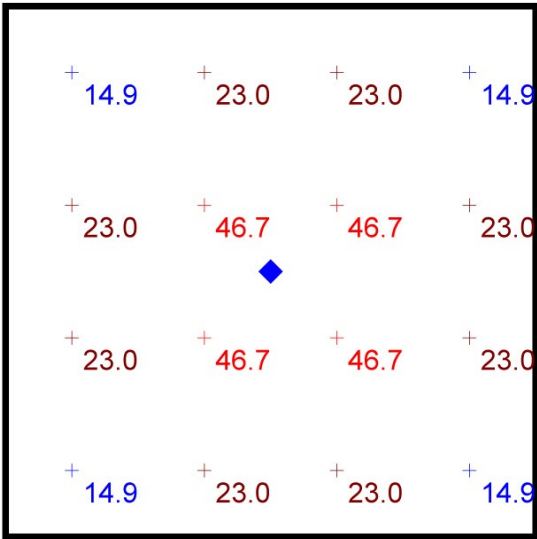




Typical Lighting Layout

Schedule						
Symbol	Quantity	Manufacturer	Catalog Number	Description	Lamp	Wattage
	1	Impact Architectural Lighting	P7512 W 40 H2	12" length str8 downlight cylinder	4000k 90cri LED	21

Statistics						
Description	Symbol	Avg	Max	Min	Max/Min	Avg/Min
str8		26.9 fc	46.7 fc	14.9 fc	3.1:1	1.8:1



Plan View
Scale - 1" = 2ft

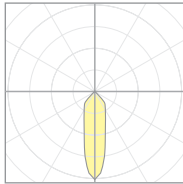
- 8' x 8' x 10'H space
- 80/50/20 reflectances
- bottom of fixture at 8' aff
- FC readings at 2.5' aff
- layout conducted using P7512 with 90 CRI H2 (1985 lm) with wide beam spread



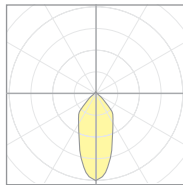
Calculation Table

The application of a Light Loss Factor is required to:

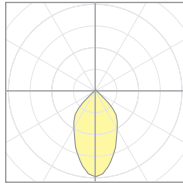
- match the lumen output for the power module specified
- incorporate the increased lumen output due to LED/Driver upgrades



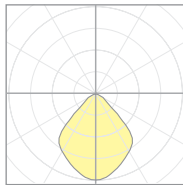
20921
P7506-S-40H3
S 20° spot



20922
P7506-M-40H3
M 30° med



20923
P7506-W-40H3
W 50° wide

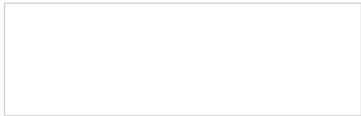


20924
P7506-EW-40H3
xW 90° extra wide

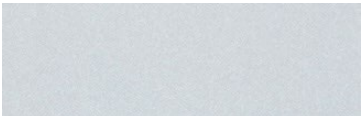
Cat No	Delivered* Lumens	Watts 120V / 277V	IES File #	LLF to be applied
L1	395	4	20921 spot	.12
			20922 med	.12
			20923 wide	.12
			20924 x-wide	.12
L2	695	7	20921 spot	.22
			20922 med	.22
			20923 wide	.22
			20924 x-wide	.22
L3	995	10	20921 spot	.31
			20922 med	.31
			20923 wide	.31
			20924 x-wide	.31
H1	1390	14	20921 spot	.43
			20922 med	.43
			20923 wide	.43
			20924 x-wide	.43
H2	1985	21	20921 spot	.62
			20922 med	.62
			20923 wide	.63
			20924 x-wide	.61
H3	2780	28	20921 spot	.86
			20922 med	.88
			20923 wide	.88
			20924 x-wide	.88

*delivered lumens based on 4000K, 90+ cri

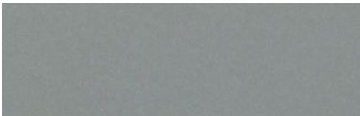
Powder Coat Paint Finishes



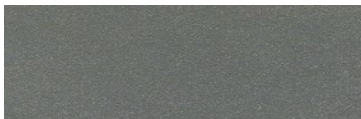
MW matte white



AP anodized paint
AN silver anodized



SS satin silver



TG textured gray



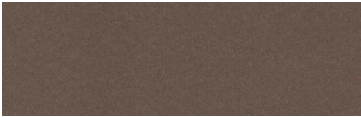
FB flat black



SB satin black
ANB anodized black



CP champagne



BZ bronze



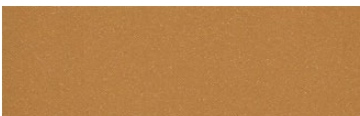
GM gun metal



OR orange 2011



BU blue 5017



BS brass



RD red 3020



YO yellow 1018



MB military blue

For accurate color verification, actual finish samples are available upon request.

Premium Finishes*



RAL#

*Available on select series. Consult product submittal for availability.